

## YOUR CAREERS WALES SCHOOL DELIVERY TEAM

### School Account Executive (Careers Adviser)

Supports your child in their career planning to help them make informed decisions. You will see our Careers Advisers at reviews, parents evenings and other school events.

Your school Careers Adviser is:

<input type="text"/>	Name:	<input type="text"/>
	Mobile:	<input type="text"/>

### Business Engagement Adviser (BEA)

Helps your school to engage with employers. This improves students' awareness of the labour market and increases their understanding of the world of work.

Your school BEA is:

<input type="text"/>	Name:	<input type="text"/>
	Mobile:	<input type="text"/>

### Careers and the World of Work Co-ordinator (CWoW)

Supports your school with their Careers and the World of Work (CWoW) curriculum. This includes working towards our Careers Wales Mark.

Your school Careers and the World of Work Co-ordinator is:

<input type="text"/>	Name:	<input type="text"/>
	Mobile:	<input type="text"/>



## ABOUT US

Careers Wales provides free and impartial careers information advice and guidance to support anyone making education or employment decisions.

We can help young people and adults with their career plans.

We have a team of specialist advisers who work in special schools across Wales.

Find out more [about Careers Wales](#).



### CONNECT WITH CAREERS WALES



[www.careerswales.gov.wales](http://www.careerswales.gov.wales)



[post@careerswales.gov.wales](mailto:post@careerswales.gov.wales)



0800 028 4844



Webchat



@CareersWales

# CAREERSWALES.GOV.WALES - Information for Parents and carers

Our website has information for parents and carers of young people with Additional Learning Needs (ALN)



[Find out more about how you can help your child to plan their future](#)



[Find out more about how the Careers Adviser can support you and your child with their future plans](#)



[Find out what options are available for young people when they leave school](#)



[Find out more about other agencies that support young people and their families](#)



[Find out more about transition planning reviews and how to prepare for them](#)



[Print/read the booklet for parents and carers](#)

This booklet introduces you to the services that Careers Wales offers to young people with special educational needs.

www.careerswales.gov.wales 0800 028 48 44

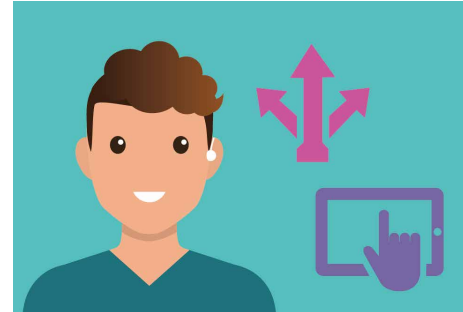


## WITH YOUR CHILD LOOK AT



### What am I like?

Find out what you are like as a person, what you're good at doing and why knowing this is useful.



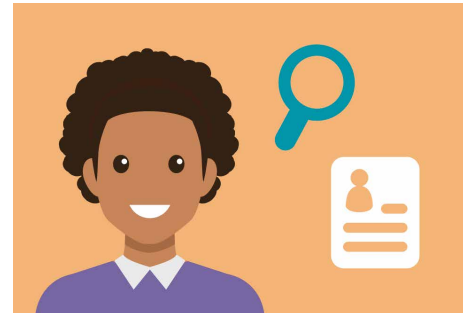
### Find out about your options

Find out about the different options open to you when you reach 16 years old.



### Get help with making decisions

Find out what you should think about to help you make decisions about your future.



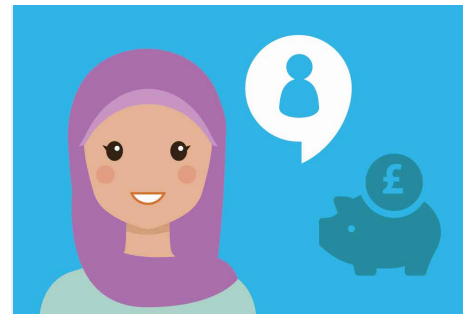
### Looking for Work

Find out how to find and apply for a job, get help with CVs and application forms and know your rights at work.



### Living Independently

Find out where you could live as an adult and what things you could be doing during your day.



### Who can help me?

Find out the people and organisations that can help you plan your future.

# WITH YOUR CHILD LOOK AT



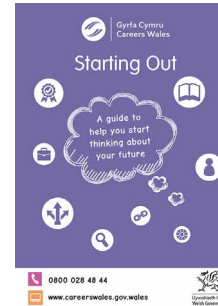
## Who am I?

Take the quiz to find out more about yourself and the types of work that may suit you.



## About Jobs

Find out about the top 30 jobs Careers Advisers are asked about. Get to know the jobs people do, what they get paid and if it could be the right job for you.



## Starting Out

A guide to help you start thinking about your future.



## Planning Ahead

A guide to what you can do when you leave school.

## OTHER INFORMATION AND SUPPORT



[careerswales.gov.wales](https://careerswales.gov.wales)



[tv.careerswales.gov.wales](https://tv.careerswales.gov.wales)



[Careers Wales on You Tube](https://www.youtube.com/careerswales)



[workingwales.gov.wales](https://workingwales.gov.wales)